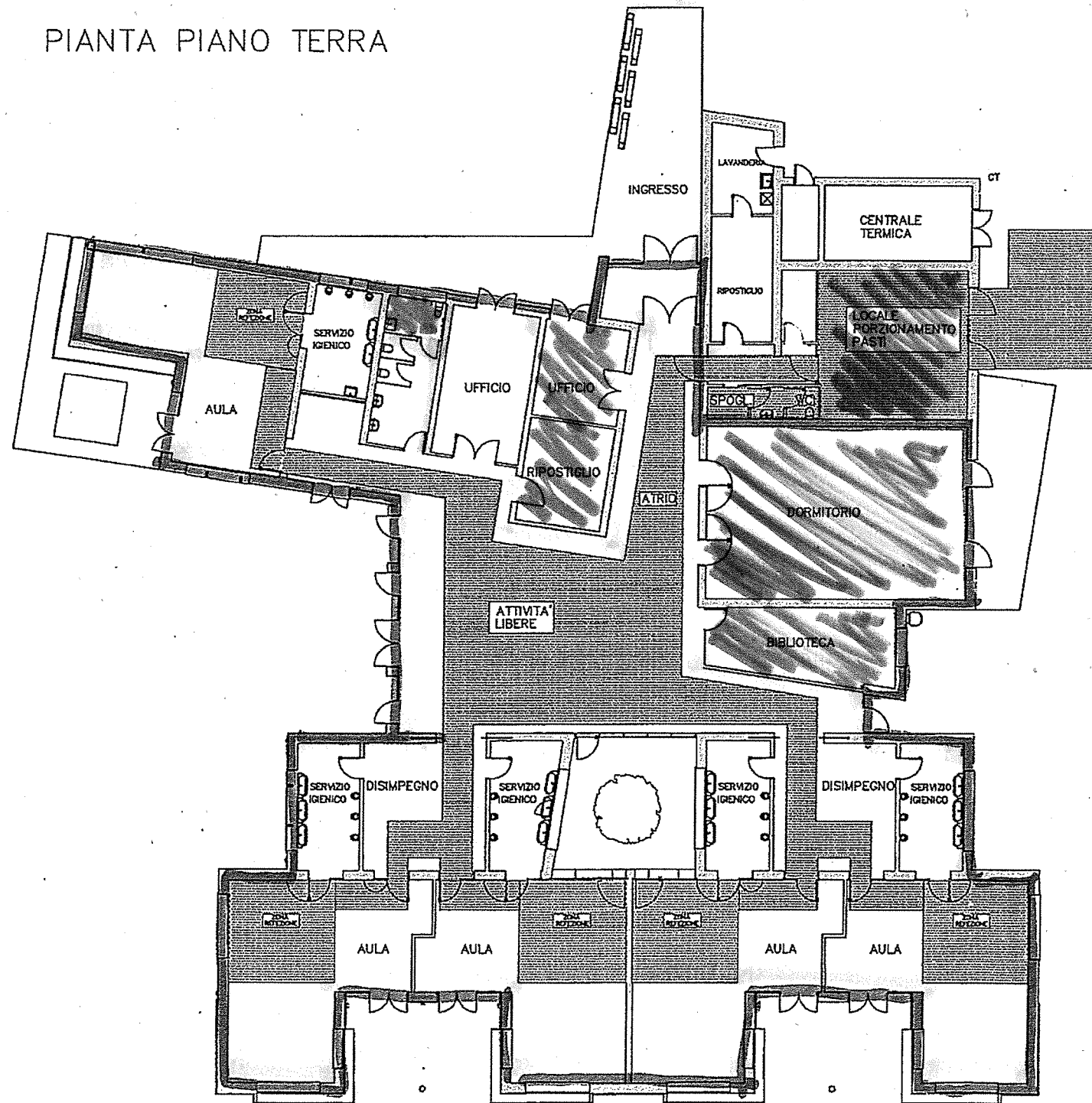
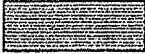

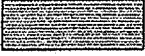
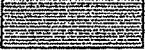


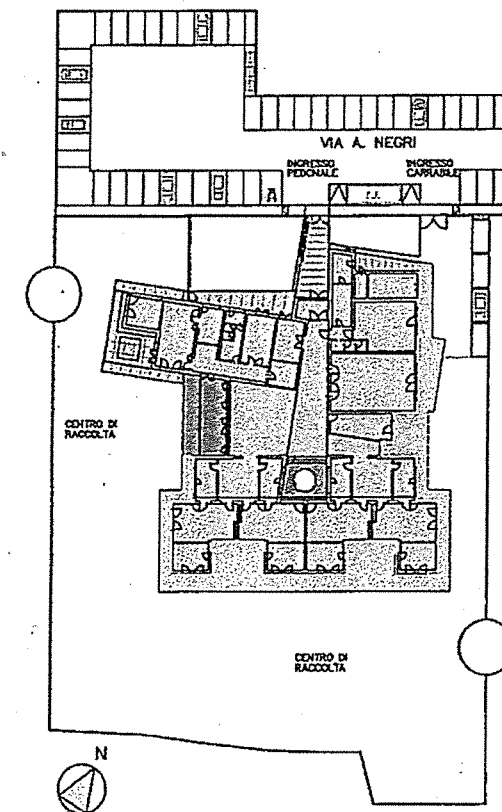
PIANTA PIANO TERRA



LUOGHI DI PERTINENZA DELL'APPALTO

-  REFETTORIO/ZONA LAVAGGIO
-  SPOGLIATOI/SERVIZI IGIENICI
-  AREA MANOVRA AUTOMEZZO
-  PERCORSI COMUNI DI TRANSITO

PLANIMETRIA ESTERNA



SCUOLA INFANZIA "ADA NEGRI"
Via A. Negri

PLANIMETRIE LOCALI

Il Tecnico incaricato
ing. Franco Maschio
10 settembre 2015